

# Dislocation density tensor

Samuel Forest

Mines ParisTech / CNRS  
Centre des Matériaux/UMR 7633  
BP 87, 91003 Evry, France  
Samuel.Forest@mines-paristech.fr



# Plan

- 1 Continuum crystal plasticity
  - Incompatibility and dislocation density tensor
  - Lattice curvature tensor
  
- 2 Need for generalized continuum crystal plasticity

# Plan

- 1 Continuum crystal plasticity
  - Incompatibility and dislocation density tensor
  - Lattice curvature tensor
- 2 Need for generalized continuum crystal plasticity

# Notations for tensor analysis (1)

The Euclidean space is endowed with an arbitrary coordinate system characterizing the points  $M(q^i)$ . The basis vectors are defined as

$$\underline{\mathbf{e}}_i = \frac{\partial M}{\partial q^i}$$

The reciprocal basis  $(\underline{\mathbf{e}}^i)_{i=1,3}$  of  $(\underline{\mathbf{e}}_i)_{i=1,3}$  is the unique triad of vectors such that

$$\underline{\mathbf{e}}^i \cdot \underline{\mathbf{e}}_j = \delta_j^i$$

If a Cartesian orthonormal coordinate system is chosen, then both bases coincide.

## Notations for tensor analysis (2)

The **gradient** operator for a tensor field  $T(\underline{\mathbf{X}})$  of arbitrary rank is then defined as

$$\text{grad } T = T \otimes \nabla := \frac{\partial T}{\partial q^i} \otimes \underline{\mathbf{e}}^i$$

The gradient operation therefore increases the tensor rank by one.

The **divergence** operator for a tensor field  $T(\underline{\mathbf{X}})$  of arbitrary rank is then defined as

$$\text{div } T = T \cdot \nabla := \frac{\partial T}{\partial q^i} \cdot \underline{\mathbf{e}}^i$$

The divergence operation therefore decreases the tensor rank by one.

The **curl** operator (or rotational operator) for a tensor field  $T(\underline{\mathbf{X}})$  of arbitrary rank is then defined as

$$\text{curl } T = T \wedge \nabla := \frac{\partial T}{\partial q^i} \wedge \underline{\mathbf{e}}^i$$

where the vector product is  $\wedge$   $\underline{\mathbf{a}} \wedge \underline{\mathbf{b}} = \epsilon_{ijk} a_j b_k \underline{\mathbf{e}}_i = \underline{\underline{\epsilon}} : (\underline{\mathbf{a}} \otimes \underline{\mathbf{b}})$

The component  $\epsilon_{ijk}$  of the third rank permutation tensor is the signature of the permutation of (1, 2, 3).

The curl operation therefore leaves the tensor rank unchanged.

## Notations for tensor analysis (3)

With respect to a Cartesian orthonormal basis, the previous formula simplify. We give the expressions for a second rank tensor  $\underline{\mathbf{T}}$

$$\begin{aligned}\text{grad } \underline{\mathbf{T}} &= T_{ij,k} \underline{\mathbf{e}}_i \otimes \underline{\mathbf{e}}_j \otimes \underline{\mathbf{e}}_k \\ \text{div } \underline{\mathbf{T}} &= T_{ij,j} \underline{\mathbf{e}}_i\end{aligned}$$

We consider then successively the curl of a vector field and of a second rank vector field, in a Cartesian orthonormal coordinate frame

$$\begin{aligned}\text{curl } \underline{\mathbf{u}} &= \frac{\partial \underline{\mathbf{u}}}{\partial x_j} \wedge \underline{\mathbf{e}}_j = u_{i,j} \underline{\mathbf{e}}_i \wedge \underline{\mathbf{e}}_j = \epsilon_{kij} u_{i,j} \underline{\mathbf{e}}_k \\ \text{curl } \underline{\mathbf{A}} &= \frac{\partial \underline{\mathbf{A}}}{\partial x_k} \wedge \underline{\mathbf{e}}_k = A_{ij,k} \underline{\mathbf{e}}_i \otimes \underline{\mathbf{e}}_j \wedge \underline{\mathbf{e}}_k = \epsilon_{mjk} A_{ij,k} \underline{\mathbf{e}}_i \otimes \underline{\mathbf{e}}_m\end{aligned}$$

## Notations for tensor analysis (4)

We also recall the Stokes formula for a vector field for a surface  $\mathcal{S}$  with unit normal vector  $\underline{\mathbf{n}}$  and oriented closed border line  $\mathcal{L}$ :

$$\oint_{\mathcal{L}} \underline{\mathbf{u}} \cdot \underline{\mathbf{dl}} = - \int_{\mathcal{S}} (\text{curl } \underline{\mathbf{u}}) \cdot \underline{\mathbf{n}} \, ds, \quad \oint_{\mathcal{L}} u_i dl_i = -\epsilon_{kij} \int_{\mathcal{S}} u_{i,j} n_k \, ds$$

Applying the previous formula to  $u_j = A_{ij}$  at fixed  $i$  leads to the Stokes formula for a tensor field of rank 2:

$$\oint_{\mathcal{L}} \underline{\mathbf{A}} \cdot \underline{\mathbf{dl}} = - \int_{\mathcal{S}} (\text{curl } \underline{\mathbf{A}}) \cdot \underline{\mathbf{n}} \, ds, \quad \oint_{\mathcal{L}} A_{ij} dl_j = -\epsilon_{mjk} \int_{\mathcal{S}} A_{ij,k} n_m \, ds$$

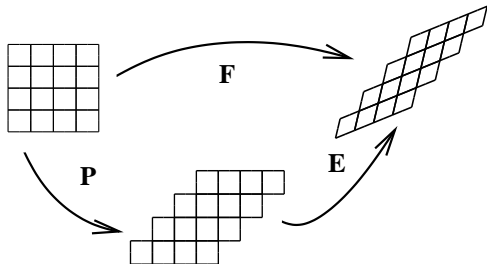
# Plan

- 1 Continuum crystal plasticity
  - Incompatibility and dislocation density tensor
  - Lattice curvature tensor
- 2 Need for generalized continuum crystal plasticity



# Incompatibility of elastic and plastic deformations

$$\tilde{\mathbf{F}} = \tilde{\mathbf{E}} \cdot \tilde{\mathbf{P}}$$



In continuum mechanics, the previous differential operators are used with respect to the initial coordinates  $\underline{\mathbf{X}}$  or with respect to the current coordinates  $\underline{\mathbf{x}}$  of the material points. In the latter case, the notation  $\nabla$ , grad, div and curl are used but in the former case we adopt  $\nabla_{\mathbf{X}}$ , Grad, Div and Curl.

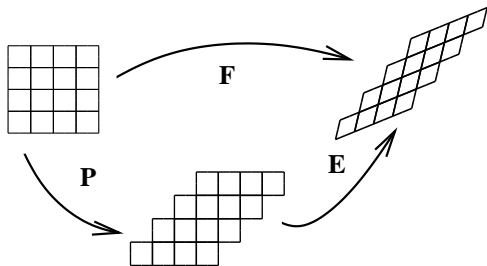
$$\tilde{\mathbf{F}} = \tilde{\mathbf{1}} + \text{Grad } \underline{\mathbf{u}} \quad \implies \text{Curl } \tilde{\mathbf{F}} = 0$$

The deformation gradient is a compatible field which derives from the displacement vector field. This is generally not the case for elastic and plastic deformation:

$$\text{Curl } \tilde{\mathbf{E}} \neq 0, \quad \text{Curl } \tilde{\mathbf{P}} \neq 0$$

It may happen incidentally that elastic deformation be compatible for instance when plastic or elastic deformation is homogeneous.

# Incompatibility of elastic and plastic deformations



$$\tilde{\mathbf{F}} = \tilde{\mathbf{E}} \cdot \tilde{\mathbf{P}}$$

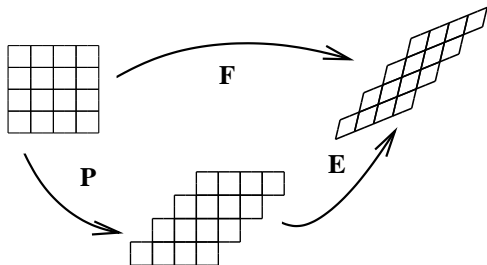
$\tilde{\mathbf{E}}$  relates the infinitesimal vectors  $\underline{d\zeta}$  and  $\underline{dx}$ , where  $\underline{d\zeta}$  results from the cutting and releasing operations from the infinitesimal current lattice vector  $\underline{dx}$

$$\underline{d\zeta} = \tilde{\mathbf{E}}^{-1} \cdot \underline{dx}$$

If  $S$  is a smooth surface containing  $\underline{x}$  in the current configuration and bounded by the closed line  $c$ , the true Burgers vector is defined as

$$\underline{\mathbf{B}} = \oint_c \tilde{\mathbf{E}}^{-1} \cdot \underline{dx}$$

# Dislocation density tensor in continuum crystal plasticity



$$\tilde{\mathbf{F}} = \tilde{\mathbf{E}} \cdot \tilde{\mathbf{P}}$$

$\tilde{\mathbf{E}}$  relates the infinitesimal vectors  $\underline{d\zeta}$  and  $\underline{dx}$ , where  $\underline{d\zeta}$  results from the cutting and releasing operations from the infinitesimal current lattice vector  $\underline{dx}$

$$\underline{d\zeta} = \tilde{\mathbf{E}}^{-1} \cdot \underline{dx}$$

If  $S$  is a smooth surface containing  $\underline{x}$  in the current configuration and bounded by the closed line  $c$ , the true Burgers vector is defined as

$$\underline{\mathbf{B}} = \oint_c \tilde{\mathbf{E}}^{-1} \cdot \underline{dx} = - \int_S (\text{curl } \tilde{\mathbf{E}}^{-1}) \cdot \underline{n} \, ds = \int_S \underline{\alpha} \cdot \underline{n} \, ds$$

according to Stokes formula which gives the definition of the true dislocation density tensor

$$\underline{\alpha} = -\text{curl } \tilde{\mathbf{E}}^{-1} = -\epsilon_{jkl} E_{ik,l}^{-1} \underline{e}_i \otimes \underline{e}_j$$

## Dislocation density tensor in continuum crystal plasticity

The Burgers vector can also be computed by means of a closed circuit  $c_0 \subset \Omega_0$  convected from  $c \subset \Omega$ :

$$\begin{aligned}\underline{\mathbf{B}} &= \oint_c \underline{\mathbf{E}}^{-1} \cdot d\underline{\mathbf{x}} = \oint_{c_0} \underline{\mathbf{E}}^{-1} \cdot \underline{\mathbf{F}} \cdot d\underline{\mathbf{X}} = \oint_{c_0} \underline{\mathbf{P}} \cdot d\underline{\mathbf{X}} \\ &= - \int_{S_0} (\text{Curl } \underline{\mathbf{P}}) \cdot d\underline{\mathbf{S}} = - \int_S (\text{Curl } \underline{\mathbf{P}}) \cdot \underline{\mathbf{F}}^T \cdot \frac{d\underline{\mathbf{s}}}{J}\end{aligned}$$

Nanson's formula  $d\underline{\mathbf{s}} = J \underline{\mathbf{F}}^{-T} \cdot d\underline{\mathbf{S}}$  has been used. We obtain the alternative definition of the dislocation density tensor

$$\underline{\boldsymbol{\alpha}} = -\text{curl } \underline{\mathbf{E}}^{-1} = -\frac{1}{J} (\text{Curl } \underline{\mathbf{P}}) \cdot \underline{\mathbf{F}}^T$$

## Dislocation density tensor in continuum crystal plasticity

The Burgers vector can also be computed by means of a closed circuit  $c_0 \subset \Omega_0$  convected from  $c \subset \Omega$ :

$$\begin{aligned}\underline{\mathbf{B}} &= \oint_c \underline{\mathbf{E}}^{-1} \cdot d\underline{\mathbf{x}} = \oint_{c_0} \underline{\mathbf{E}}^{-1} \cdot \underline{\mathbf{F}} \cdot d\underline{\mathbf{X}} = \oint_{c_0} \underline{\mathbf{P}} \cdot d\underline{\mathbf{X}} \\ &= - \int_{S_0} (\text{Curl } \underline{\mathbf{P}}) \cdot d\underline{\mathbf{S}} = - \int_S (\text{Curl } \underline{\mathbf{P}}) \cdot \underline{\mathbf{F}}^T \cdot \frac{d\underline{\mathbf{s}}}{J}\end{aligned}$$

Nanson's formula  $d\underline{\mathbf{s}} = J \underline{\mathbf{F}}^{-T} \cdot d\underline{\mathbf{S}}$  has been used. We obtain the alternative definition of the dislocation density tensor

$$\underline{\boldsymbol{\alpha}} = -\text{curl } \underline{\mathbf{E}}^{-1} = -\frac{1}{J} (\text{Curl } \underline{\mathbf{P}}) \cdot \underline{\mathbf{F}}^T$$

or equivalently

$$J(\text{curl } \underline{\mathbf{E}}^{-1}) \cdot \underline{\mathbf{E}}^{-T} = (\text{Curl } \underline{\mathbf{P}}) \cdot \underline{\mathbf{P}}^T$$

which is a consequence of  $\text{curl } \underline{\mathbf{F}} = \text{curl}(\underline{\mathbf{E}} \cdot \underline{\mathbf{P}}) = 0$

## Dislocation density tensor at small deformation

We introduce the notations

$$\tilde{\mathbf{H}} = \text{Grad } \underline{\mathbf{u}} = \tilde{\mathbf{H}}^e + \tilde{\mathbf{H}}^p, \quad \text{with} \quad \tilde{\mathbf{H}}^e = \tilde{\boldsymbol{\varepsilon}}^e + \tilde{\boldsymbol{\omega}}^e, \quad \tilde{\mathbf{H}}^p = \tilde{\boldsymbol{\varepsilon}}^p + \tilde{\boldsymbol{\omega}}^p$$

Within the small perturbation framework

$$\tilde{\mathbf{F}} = \tilde{\mathbf{1}} + \tilde{\mathbf{H}} = \tilde{\mathbf{1}} + \tilde{\boldsymbol{\varepsilon}}^e + \tilde{\boldsymbol{\omega}}^e + \tilde{\boldsymbol{\varepsilon}}^p + \tilde{\boldsymbol{\omega}}^p \simeq (\tilde{\mathbf{1}} + \tilde{\boldsymbol{\varepsilon}}^e + \tilde{\boldsymbol{\omega}}^e) \cdot (\tilde{\mathbf{1}} + \tilde{\boldsymbol{\varepsilon}}^p + \tilde{\boldsymbol{\omega}}^p) = \tilde{\mathbf{E}} \cdot \tilde{\mathbf{P}}$$

We have

$$\tilde{\mathbf{E}} \simeq \tilde{\mathbf{1}} + \tilde{\mathbf{H}}^e, \quad \tilde{\mathbf{P}} \simeq \tilde{\mathbf{1}} + \tilde{\mathbf{H}}^p$$

$$\tilde{\mathbf{E}}^{-1} \simeq \tilde{\mathbf{1}} - \tilde{\mathbf{H}}^e$$

so that the dislocation density tensor can be computed as

$$\boldsymbol{\alpha} \simeq \text{Curl } \tilde{\mathbf{H}}^e = -\text{Curl } \tilde{\mathbf{H}}^p$$

since  $\text{Curl } \tilde{\mathbf{H}} = 0$  due to the compatibility of the deformation gradient.

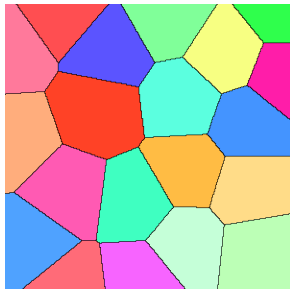
# Plan

- 1 Continuum crystal plasticity
  - Incompatibility and dislocation density tensor
  - Lattice curvature tensor
- 2 Need for generalized continuum crystal plasticity

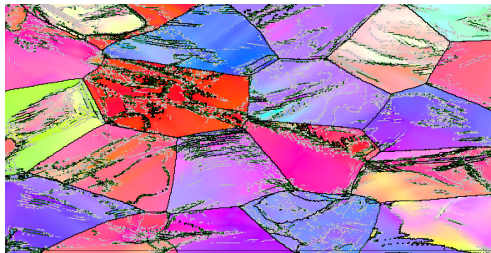
# Lattice rotation full field measurement

initial orientations  
deformation

lattice orientation field after  
deformation

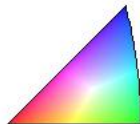


70.00  $\mu\text{m}$  = 70 steps  
Boundary levels:  $1^\circ$   $5^\circ$   $10^\circ$   
IPF [001]



100.0  $\mu\text{m}$  = 100 steps  
Boundary levels:  $2^\circ$   $5^\circ$   $10^\circ$   
IPF [001]

1 1 1



0 0 1      1 0 1  
Inverse Pole Figure [001]



# Dislocation density vs. lattice curvature

Experimental techniques like EBSD provide the field of lattice orientation and, consequently, of lattice rotation  $\underline{\mathbf{R}}^e$  during deformation. Since

$$\underline{\boldsymbol{\alpha}} = -\text{curl } \underline{\mathbf{E}}^{-1} = -\text{curl}(\underline{\mathbf{U}}^{e-1} \cdot \underline{\mathbf{R}}^{eT})$$

the hypothesis of small elastic strain (and in fact of small elastic strain gradient) implies

$$\underline{\boldsymbol{\alpha}} \simeq -\text{curl } \underline{\mathbf{R}}^{eT}$$

If, in addition, elastic rotations are small, we have

$$\underline{\boldsymbol{\alpha}} \simeq -\text{curl}(\underline{\mathbf{1}} - \underline{\boldsymbol{\omega}}^e) = \text{curl } \underline{\boldsymbol{\omega}}^e$$

The small rotation axial vector is defined as

$$\underline{\boldsymbol{\omega}}^e = -\frac{1}{2}\underline{\boldsymbol{\epsilon}} : \underline{\boldsymbol{\omega}}^e, \quad \underline{\boldsymbol{\omega}}^e = -\underline{\boldsymbol{\epsilon}} \cdot \underline{\boldsymbol{\omega}}^e$$

## Dislocation density vs. lattice curvature

or, in matrix form,

$$[\underline{\omega}^e] = \begin{bmatrix} 0 & \omega_{12}^e & -\omega_{31}^e \\ -\omega_{12}^e & 0 & \omega_{23}^e \\ \omega_{31}^e & -\omega_{23}^e & 0 \end{bmatrix} = \begin{bmatrix} 0 & -\dot{\omega}_3^e & \dot{\omega}_2^e \\ \dot{\omega}_3^e & 0 & -\dot{\omega}_1^e \\ -\dot{\omega}_2^e & \dot{\omega}_1^e & 0 \end{bmatrix}$$

The gradient of the lattice rotation field delivers the lattice curvature tensor. In the small deformation context, the gradient of the rotation tensor is represented by the gradient of the axial vector:

$$\underline{\kappa} := \text{grad } \underline{\dot{\omega}}^e$$

One can establish a direct link between  $\text{curl } \underline{\omega}^e$  and the gradient of the axial vector associated with  $\underline{\omega}$ .

## Dislocation density vs. lattice curvature

$$\begin{aligned}
 [\text{curl } \underline{\omega}^e] &= \begin{bmatrix} \omega_{12,3}^e + \omega_{31,2}^e & -\omega_{31,1}^e & -\omega_{12,1}^e \\ -\omega_{23,2}^e & \omega_{12,3}^e + \omega_{23,1}^e & -\omega_{12,2}^e \\ -\omega_{23,3}^e & -\omega_{31,3}^e & \omega_{23,1}^e + \omega_{31,2}^e \end{bmatrix} \\
 &= \begin{bmatrix} -\overset{\times}{\omega}_{3,3}^e - \overset{\times}{\omega}_{2,2}^e & \overset{\times}{\omega}_{2,1}^e & \overset{\times}{\omega}_{3,1}^e \\ \overset{\times}{\omega}_{1,2}^e & -\overset{\times}{\omega}_{3,3}^e - \overset{\times}{\omega}_{1,1}^e & \overset{\times}{\omega}_{3,2}^e \\ \overset{\times}{\omega}_{1,3}^e & \overset{\times}{\omega}_{2,3}^e & -\overset{\times}{\omega}_{1,1}^e - \overset{\times}{\omega}_{2,2}^e \end{bmatrix}
 \end{aligned}$$

from which it becomes apparent that

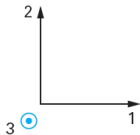
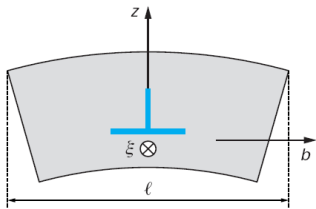
$$\underline{\alpha} = \underline{\kappa}^T - (\text{trace } \underline{\kappa}) \underline{\mathbf{1}}, \quad \underline{\kappa} = \underline{\alpha}^T - \frac{1}{2}(\text{trace } \underline{\alpha}) \underline{\mathbf{1}}$$

This is a remarkable relation linking, with the context of small elastic strains<sup>1</sup> and rotations, the dislocation density tensor to lattice curvature. It is known as Nye's formula [Nye, 1953].

---

<sup>1</sup>and in fact of small gradient of elastic strain.

# Lattice curvature due to edge dislocations



$$\underline{\alpha} = -\rho_G b \underline{e}_1 \otimes \underline{e}_3$$

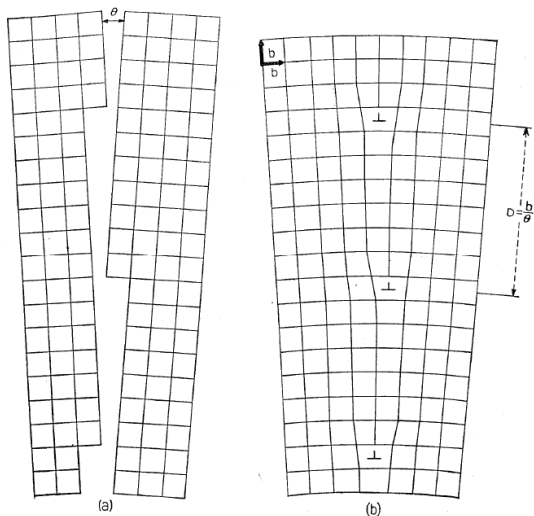
so that

$$\underline{\kappa} = -\rho_G b \underline{e}_3 \otimes \underline{e}_1$$

the only non-vanishing component is

$$\kappa_{31} = \Phi_{3,1}^e$$

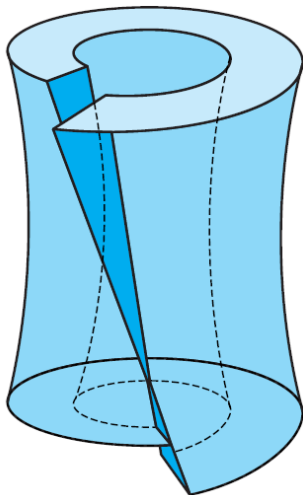
which corresponds to bending with respect to axis 3



## Tilt boundary (Read, 1958)

Fig. XI-1. — Joint de grains simple. Le plan de la figure est parallèle à une face du cube et normal à l'axe de rotation relative des deux grains. (a) Deux grains ayant un axe quaternaire commun et une différence d'orientation  $\theta$ . (b) Les deux grains sont réunis pour former un bicristal. Cette réunion ne demande qu'une déformation élastique, sauf là où un plan d'atomes se termine sur le joint en une dislocation coin marquée par le symbole  $\perp$ .

# Lattice torsion due to screw dislocations



screw dislocations parallel to  $\underline{e}_3$

$$\underline{\alpha} = \rho^G b \underline{e}_3 \otimes \underline{e}_3$$

$$\underline{\kappa} = \underline{\alpha}^T - \frac{1}{2}(\text{trace } \underline{\alpha}) \underline{\mathbf{1}}$$

$$[\underline{\kappa}] = \frac{\rho_G b}{2} \begin{bmatrix} -1 & 0 & 0 \\ 0 & -1 & 0 \\ 0 & 0 & 1 \end{bmatrix}$$

torsion with respect to all axes!!!

relaxed Volterra cylinder

[Friedel, 1964]

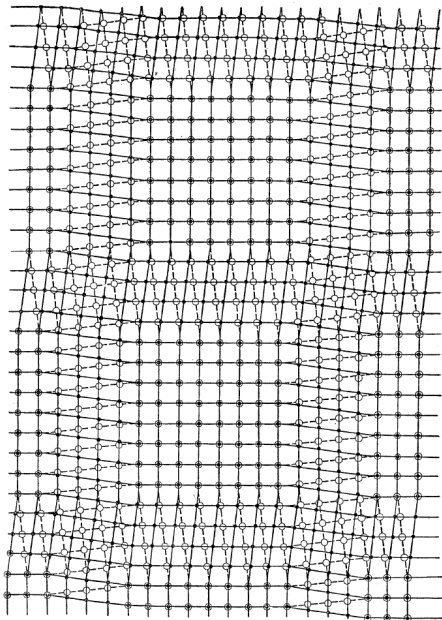


Fig. XII-2. — Joint de torsion pure. Le joint est parallèle du plan de la figure, et les deux grains ont subi une légère rotation relative autour de l'axe quaternaire normal à la figure. Les cercles blancs représentent des atomes juste au-dessus du joint, et les noirs des atomes juste au-dessous. Les grains s'unissent continûment, sauf suivant deux ensembles de dislocations vis qui forment un quadrillage.

## Twist boundary

two families of orthogonal screw dislocations

$$\underline{\alpha} = -\rho_G b(\underline{e}_1 \otimes \underline{e}_1 + \underline{e}_2 \otimes \underline{e}_2)$$

$$[\underline{\kappa}] = \rho_G b \begin{bmatrix} 0 & 0 & 0 \\ 0 & 0 & 0 \\ 0 & 0 & 1 \end{bmatrix}$$

torsion with respect to axis 3

$$\kappa_{33} = \Phi_{3,3}^e$$

(Read, 1958)

# Plan

- 1 Continuum crystal plasticity
  - Incompatibility and dislocation density tensor
  - Lattice curvature tensor
- 2 Need for generalized continuum crystal plasticity








# Towards generalized single crystal plasticity

A continuum crystal plasticity model should at least include

- the effect of **scalar dislocation density**  $\rho_S$ ; this is the case of classical crystal plasticity according to Mandel, Teodosiu, Sidoroff, Asaro which incorporate hardening rules from physical metallurgy
- the effect of **dislocation density tensor**; it is the main ingredient of the continuum theory of dislocations (*closure problem*)  
geometrically necessary dislocation density  $\rho_G$

Combine both! But acknowledge then the fact that the presence of  $\underline{\alpha}$  in the constitutive equations leads to higher order partial differential equations when inserted in the equilibrium equations. Additional boundary conditions are necessary. Several possibilities:

- since  $\underline{\alpha}$  is implicitly related to  $\underline{\mathbf{P}} \otimes \nabla$  and  $\underline{\mathbf{F}} \otimes \nabla$ , consider a strain gradient model or strain gradient plasticity model;  
[Mindlin and Eshel, 1968] [Fleck and Hutchinson, 1997]
- since  $\underline{\alpha}$  is related to the lattice curvature tensor, raise the lattice rotation to internal degrees of freedom and consider a Cosserat theory.  
[Günther, 1958] [Kröner, 1963] [Mura, 1963]

-  Fleck N.A. and Hutchinson J.W. (1997).  
*Strain gradient plasticity.*  
Adv. Appl. Mech., vol. 33, pp 295–361.
-  Friedel J. (1964).  
*Dislocations.*  
Pergamon.
-  Günther W. (1958).  
*Zur Statik und Kinematik des Cosseratschen Kontinuums.*  
Abhandlungen der Braunschweig. Wiss. Ges., vol. 10, pp  
195–213.
-  Kröner E. (1963).  
*On the physical reality of torque stresses in continuum  
mechanics.*  
Int. J. Engng. Sci., vol. 1, pp 261–278.
-  Mindlin R.D. and Eshel N.N. (1968).  
*On first strain gradient theories in linear elasticity.*  
Int. J. Solids Structures, vol. 4, pp 109–124.



Mura T. (1963).

*On dynamic problems of continuous distribution of dislocations.*

Int. J. Engng. Sci., vol. 1, pp 371–381.



Nye J.F. (1953).

*Some geometrical relations in dislocated crystals.*

Acta Metall., vol. 1, pp 153–162.